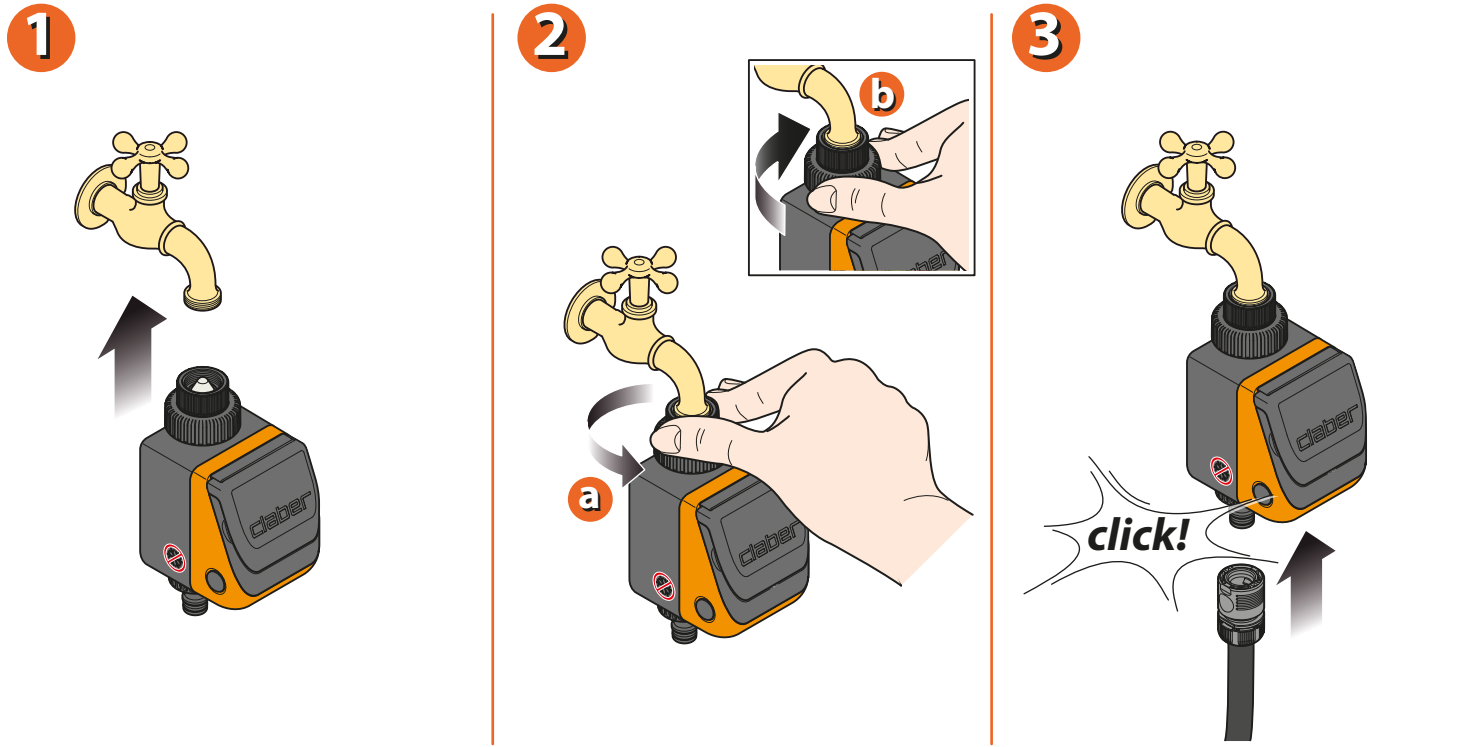
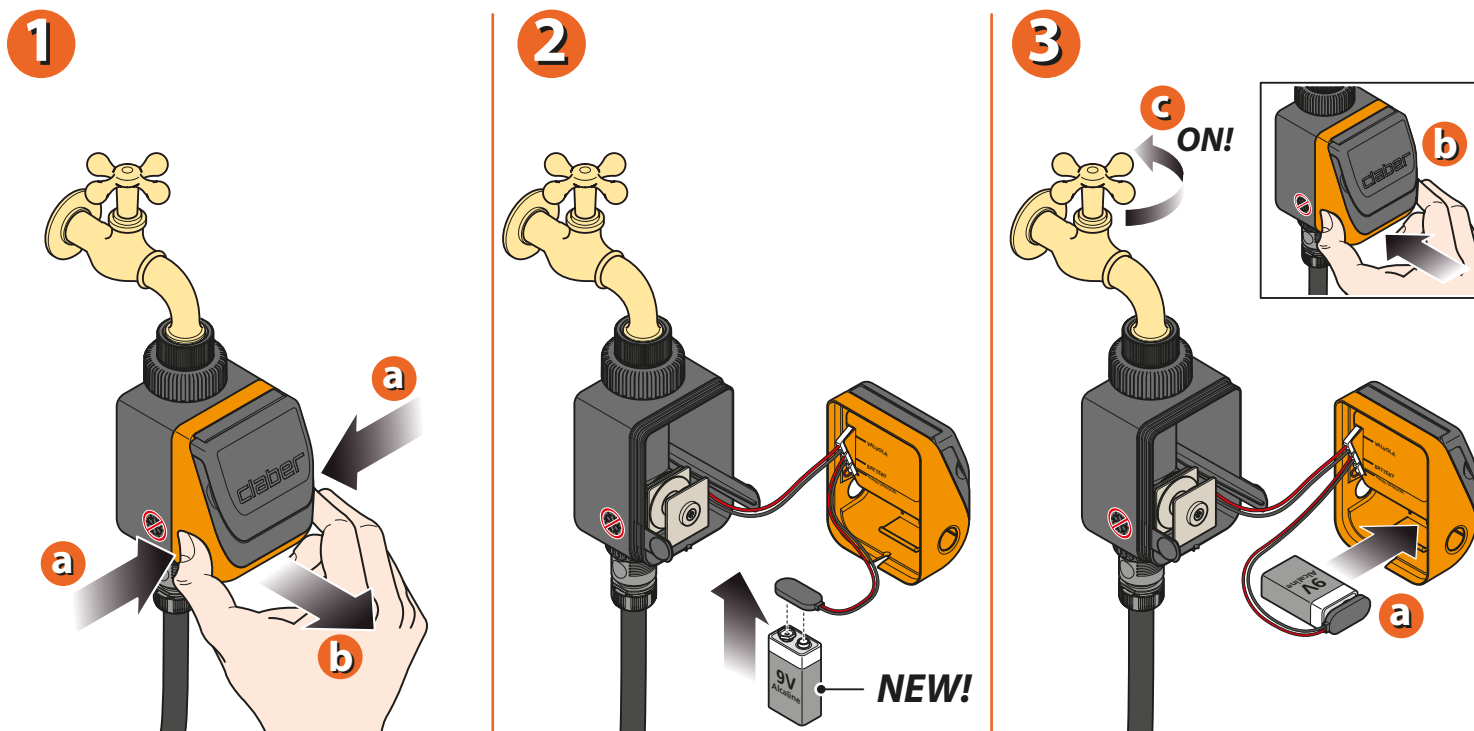


Connect the timer to the tap.



For Aquauno Pratico (p/n): 8493 - 8425  
 For Aquauno Pratico Plus (p/n): 8414

Open the timer unit by pressing the two buttons on the sides, and fit a 9V alkaline battery.  
**Important:** remember to turn on the water tap!



For Aquauno Pratico (p/n): 8493 - 8425  
 For Aquauno Pratico Plus (p/n): 8414

Press the green button to start watering. Once the watering time is judged to be sufficient (60 minutes maximum), press the red button to shut off the flow. The timer will store the duration of the watering cycle and repeat the programme every day at the same time.

**1**

**a** select the start time for watering

**b** **START!**

**Mem. START! Rec-time**

**2**

**a** **25 min. (max 60 min.)**

**b** **STOP!**

**Mem. STOP! Rec-time**

**3**

**a** Wed Tues Mon

**b** **AUTOMATIC!**

**START!** **STOP!**

For Aquauno Pratico (p/n): 8493 - 8425  
 For Aquauno Pratico Plus (p/n): 8414

To delete the programme, press the red and the green button simultaneously. At this point another programme can be set, starting at a different time and for a different duration.

**1**

**Mem.** → **START!** **STOP!**

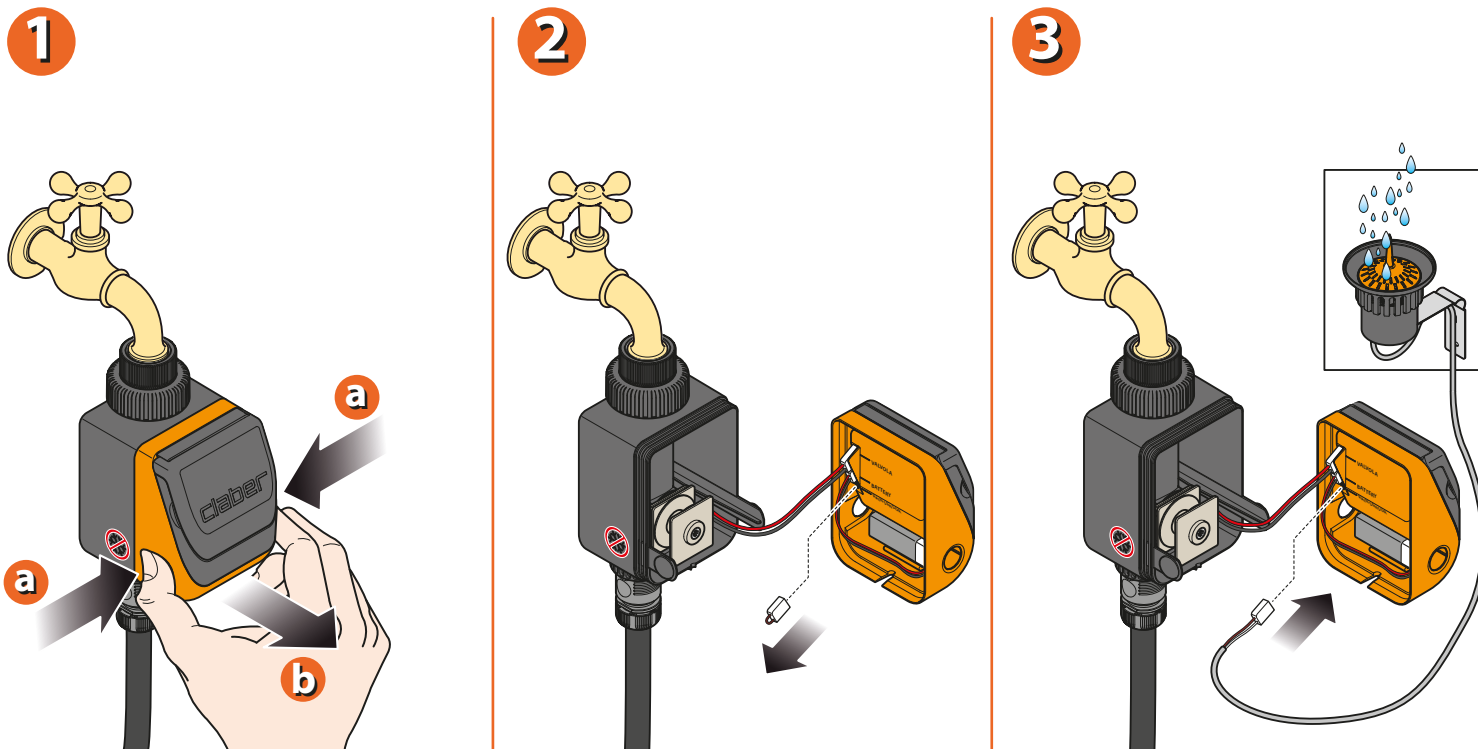
**2**

**3**

**Mem.** → **RESET!**

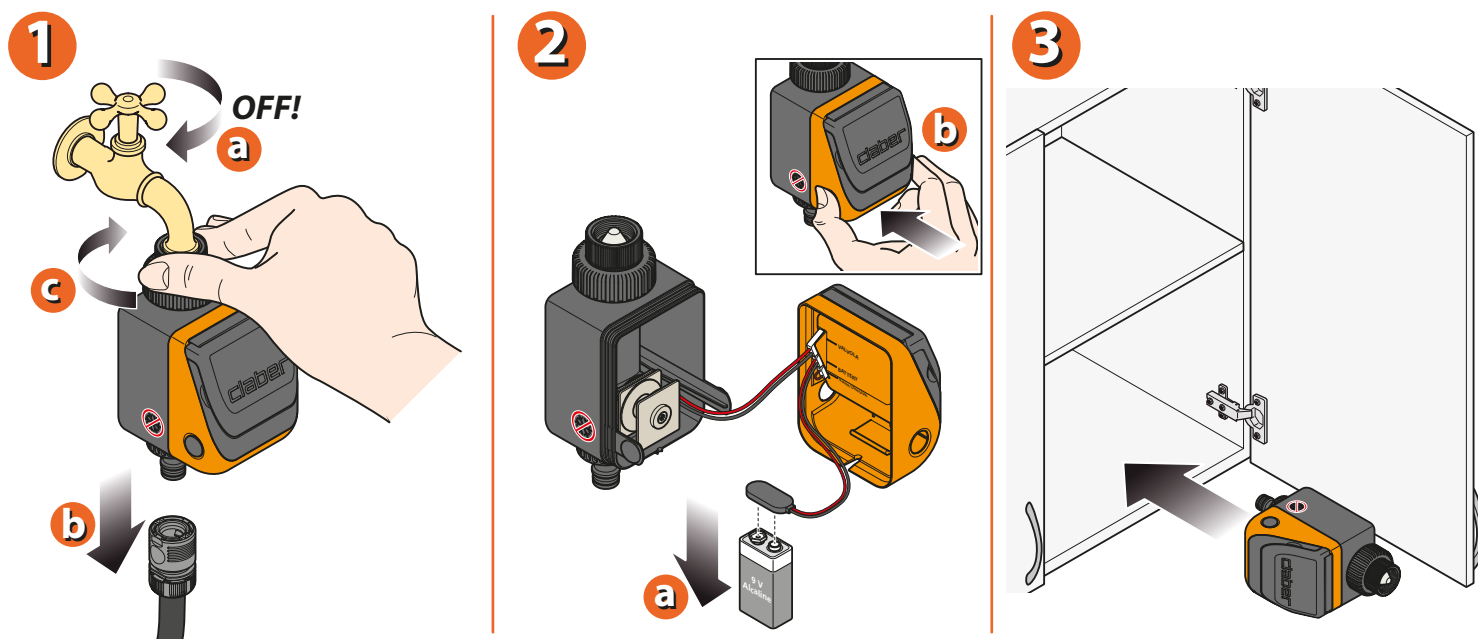
For Aquauno Pratico (p/n): 8493 - 8425  
 For Aquauno Pratico Plus (p/n): 8414

The timer can also be connected to the Rain Sensor, using the socket provided, in which case the protective jumper must be removed.



For Aquauno Pratico Plus (p/n): 8414

At the end of the warm season and before the first winter frosts, disconnect the timer from the tap and store it indoors, bearing in mind to remove the battery.



For Aquauno Pratico (p/n): 8493 - 8425  
For Aquauno Pratico Plus (p/n): 8414